

COMPLETENESS OF FOOTBALL SCHOOL (SSB) FACILITIES AND INFRASTRUCTURES: SURVEY FOR AGES GROUP 8-20 YEARS IN YOGYAKARTA CITY

Yoga Lucky Bimanggara¹ and Mansur²

¹Sports Science, Postgraduate Program, Universitas Negeri Yogyakarta, Indonesia

²Sports Science of Faculty, Universitas Negeri Yogyakarta, Indonesia

UDK 796.322-053.6

SUMMARY

The background of this research is not yet known the level of completeness of football facilities and infrastructure in football schools (SSB) throughout the City of Yogyakarta. This study aims to determine how complete the facilities and infrastructure of football in SSB throughout the City of Yogyakarta. This research is descriptive research. The method used in this research is a survey method with data collection techniques using a questionnaire. The population in this study is the football schools (SSB) throughout Yogyakarta which are active and registered at IKA Yogyakarta. The sampling technique in this study was to use purposive sampling, amounting to 28 trainers from 7 football schools (SSB). Data analysis techniques using descriptive analysis as outlined in the form of percentages. Based on the results of the study it can be concluded that the level of completeness of football facilities and infrastructure in the Yogyakarta City Soccer School (SSB) in 2016 is in the category of "very low" by 0%, the category of "low" by 0%, the category of "enough" by 17, 86%, the "good" category by 64.29%, and the "very good" category by 17.86%. Based on the average value of 35.39, the level of completeness of football facilities and infrastructure in football schools in Yogyakarta City in 2016 is in the "good" category.

Keywords: facilities and infrastructure, football, football school (SSB)

Corresponding author

Yoga Lucky Bimanggara
yogaluckyb@gmail.com

INTRODUCTION

Football is a team game, each team consisting of eleven players, and one as a goalkeeper. This game is played using legs, except for the goalkeeper who is allowed to use the arm in the penalty kick area. Football is a team game consisting of eleven players, one of which acts as a goalkeeper, the game is entirely using legs, specifically for the goalkeeper may use hands in his area (Ardian, Suharjana, & Burhaein, 2019).

In the development of this game obtained played outside the field (out door) and in a closed room (in door). The game of football is a sport that is very popular and much loved by the public both in Indonesia and in the world. This is proven by the increasing number of children, adolescents, adults, old and young who play this game both in the school environment and society. Nowadays the development of the game of football is very rapid, not only as a recreational sport or leisure time but football has become a sport of achievement.

Football is a sport that was known thousands of years ago, even though at that time soccer was still in the form of a simple game. However, until now there was no unity of opinion from where and who was the creator of football (Tarista & Jayadi, 2017). The aim of the game is to put the football as many balls as possible into the opponent's goal and try to keep his own goal, so as not to concede. A team is declared to win if the team can put the most balls into the goal again, and if the same, then the game is declared a draw (Kementerian Pendidikan dan Kebudayaan, 2003; Mustofa, Mansur, & Burhaein, 2019).

The sport which is officially played by 22 people, and 11 people in each team is very felt in Indonesia. There are many assumptions about the birth of soccer, there are documents that write that in China the Han dynasty army in the 2nd century AD playing kicking a ball into a small net was the forerunner of football, even there are historians who think that the game of football has been played in Kyoto, Japan, long before the 2nd century AD. In ancient Greece it was known as "Episkyros" and in ancient Rome there was "Harpastum". The development of soccer to become modern as it is currently most prevalent in England, that's why when England hosted the European Cup in 1996 the slogan used was "football is coming home" or soccer back to its origin. It is impossible to find certainty when and where football was born, it is clear that in Saint Honore in Paris, France was born the parent of the world soccer organization, FIFA on 21 May 1904, which until now has been the parent of world soccer including Indonesia until Indonesia (Burhaein, 2017b; Duval & Rompuy, 2016). now. In Indonesia, on the initiative of a civil engineer graduating from a technical high school in Heckelenburg, Germany, named Soeratin Sosrosoegondo, the PSSI (All Indonesian Football

Association) was agreed on April 19, 1930 (Phytanza, Burhaein, Sukoco, & Ghautama, 2018; Prasetya, 2019)

Football in Indonesia is a folk game that spreads throughout the country, so that this sport is classified as the most popular in Indonesia. Although football has been popular, the achievements of the national team have not been encouraging and there is even a downward impression. At the ASEAN level, Indonesia is still below Thailand, especially at the Asia and World level, our football achievements are still far behind and have not shown maximum achievements. As we know, that the success of achieving top achievements, can not be separated from the role of coaching from an early age. In reality on the field, we are more concerned with coaching senior players and low attention to coaching towards young players. Though early age coaching is the root of an achievement.

Coaching is done from an early age, one of them through the football school (SSB). SSB is the most appropriate place for early childhood soccer coaching. At this time there are a lot of football schools flooded with students, this situation is a good phenomenon considering the role of football schools as the roots of fostering national football achievements that can be a supplier of players for the club or for the National team.

As time went on, many SSB were flooded with students, this was not supported by the facilities and facilities owned by SSB. There are still many SSB that do not pay attention to facilities and infrastructure, this does not support the training process. Based on observations of the author's observation many soccer schools that only use the facilities in the sense of not seeing the conditions and the number of completeness of facilities owned such as; (1) balls that are ideally used 1 ball for two children but the fact on the ground is that many SSBs use one ball for more than 3 children, (2) cones that have only a few items not more than 10, this greatly hinders the training process, (3) markers used are also the same, still not more than 20 and many markers that have cracked, (4) many vests that are used are torn and no more than 2 different colors, (5) ladder, many SSBs do not have these facilities, The tool should be indispensable for the training process, (6) Speed training rings many SSBs do not yet have this tool, in my opinion this tool needs to be there to support the training process, (7) strategy boards almost all trainers have this tool but do not rule out there trainers who do not have, (8) a stopwatch should be owned by the trainers in each SSB but when on the field not all trainers have that tool. Furthermore infrastructure owned by SSB is not used as optimal as possible, such as a field that does not meet FIFA / PSSI size standards, the goal used is not in accordance with the standards and the field line that is not visible, many goal nets are missing and broken, meeting rooms not all SSBs have the infrastructure needed to support the training process, for example it is used for student guardians or trainer meetings. facilities and infrastructure are very important in the world of football, in fact it is not considered by most soccer schools, without the existence of good and complete facilities and infrastructure

the training process will not run smoothly and the process of achievement will also be hampered. Ideally the football school must be supported by components that must be fulfilled in it; such as administrators and the person in charge of a football school, has a curriculum, a certified coach, adequate facilities and infrastructure, class, field, and soccer equipment. The components of a football school are directly related to the training process.

Of the many factors above, facilities and infrastructure are one of the important factors for carrying out the training process and achieving an achievement. Facts on the field many SSB do not pay attention to these facilities and infrastructure. In particular, SSB especially in Yogyakarta City still use a lot of facilities and infrastructure improvised, maybe only a few SSB optimize facilities and infrastructure as a necessity in the training process.

METHOD

Partisipan

This reseach was carried out at 7 SSB in Yogyakarta City, namely Browidjoyo SSB, Sinar Mataram SSB, Gama SSB, Bharata SSB, HW SSB, SSB MAS, AFA SSB which were conducted on 5-30 June 2016. Sampling technique using a purposive sample, meaning that it is done by taking the subject not based on strata, random or dear but based on the existence of certain objectives. Criteria in determining this sample include: (1) trainers from the active and registered IKA Yogyakarta soccer school (SSB) (2) each SSB is taken four age groups, namely: age group (KU) 5-8 years, KU 9-12 years , KU 13-14 years, and KU 15-20 years (3) one SSB was represented by four trainers in accordance with the specified age group. Based on these criteria, there were 28 trainers from 7 SSBs in Yogyakarta.

Research methods

This research is a descriptive quantitative study. Descriptive quantitative research is research that only describes the state or status of a phenomenon (Sugiyono, 2014). The method used in this research is the survey method. Survey method is a study that is usually done with a lot of subjects, intended to gather opinions or information about the status of symptoms at the time of the study (Sugiyono, 2014).

Data collection technique

Data collection techniques using a questionnaire. The questionnaire in this study was a closed questionnaire (Sugiyono, 2014). The measurement scale in this questionnaire uses the Guttman scale using 2 answer choices namely, "yes-no".

Guttman scale, will get a firm answer, namely "yes-no"; "True False"; "Never-never"; "Positive-negative" and others" (Sugiyono, 2014). Before the actual data retrieval was used, the questionnaire was validated by two experts as expert judgment namely the PhD in sports infrastructure and sports management. After the instrument validation process was tested for reliability, to obtain reliability using the Alpha Cronbach formula (Slaney, Storey, & Barnes, 2011)). Based on the trial results, it shows that the instrument is reliable with a reliability coefficient of 0.990. The study was conducted on 5-30 June 2016 and took place in the soccer school field under study.

Data analysis

Data analysis techniques in this study used quantitative descriptive data analysis techniques. The calculation of descriptive statistics uses descriptive statistics of percentages, because included in descriptive statistics include the presentation of data through, tables, graphs, diagrams, circles, pictograms, calculation of the mean, mode, median, decile calculation, percentile, calculation of the distribution of average calculation data, deviation standards, and percentages (Sugiyono, 2014). The formula is as follows:

$$P = \frac{F}{N} \times 100\%$$

Information:

P = Percentage sought; F = Frequency; N = Number of Respondents

To clarify the process of analysis, categorization is carried out. Categorizing uses the Mean and Standard Deviation. Sugiyono (Sugiyono, 2014) to determine the score criteria using the Norm Reference Reference (PAN) in table 4 as follows:

Table 1. Assessment Norms

No	Interval	Category
1	$X > Mi + 1,8 SDi$	Very Good
2	$Mi + 0,6 SDi < X < Mi + 1,8 SDi$	Good
3	$Mi - 0,6 SDi < X < Mi + 0,6 SDi$	Medium
4	$Mi - 1,8 SDi < X < Mi - 0,6 SDi$	Low
5	$X < Mi - 1,8 SDi$	Very Low

(Source: Saifuddin Azwar, 2010: 163)

Information:

X = Final score

Mi = Mean ideal

Sdi = Ideal standard deviation

Mi formula = $\frac{1}{2}$ (ideal highest score + ideal lowest score)

SBi formula = $(1/2) (1/3)$ (ideal maximum score - ideal minimum score)

Highest ideal score = Σ item criterion x highest score

The lowest ideal score = Σ criterion item x lowest score

RESULT

The level of completeness of football facilities and infrastructure in football schools (SSB) throughout the City of Yogyakarta was revealed with a questionnaire totaling 50 items. After the research data was collected, an analysis was carried out using SPSS version 16.0 for Windows.

From the analysis of the completeness level of football facilities and infrastructure in football schools (SSB) throughout Yogyakarta, the lowest score is obtained (minimum) 26.0, the highest score (maximum) 47.0, the average (mean) 35.29, the middle value (median) 33.5, values that appear frequently (mode) 33.0, standard deviation (SD) 5.82.

If it is displayed in the form of a diagram, then the data on the level of completeness of football facilities and infrastructure in SSB throughout Yogyakarta City are shown in the following figure:

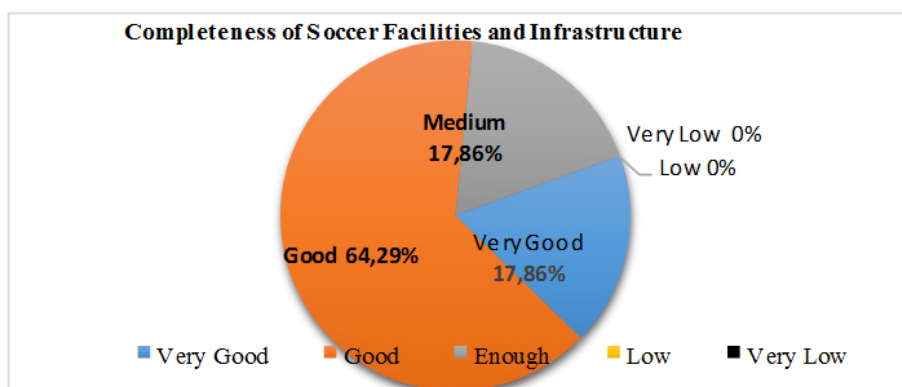


Figure 3. Pie Diagram of the Completeness of Soccer Facilities and Infrastructure in Soccer Schools in Yogyakarta City in 2016

Based on the diagram above shows that the level of completeness of football facilities and infrastructure in soccer schools in Yogyakarta City in 2016 is in the category of "very low" by 0%, the category of "low" by 0%, the category of

"enough" by 17.86%, the "good" category was 64.29%, and the "very good" category was 17.86%. Based on the average value of 35.39, the level of completeness of football facilities and infrastructure in football schools in Yogyakarta City in 2016 is in the "good" category.

DISCUSSION

1. Completeness category of all SSB

This study aims to determine the level of completeness of football facilities and infrastructure in soccer schools in Yogyakarta City in 2016. Based on the analysis shows that the level of completeness of soccer facilities and infrastructure in football schools in Yogyakarta City in 2016 is included in the good category. Overall analysis of the level of completeness of football facilities and infrastructure in Yogyakarta City Soccer Schools in 2016 based on the age group of each SSB is presented in the figure as follows:

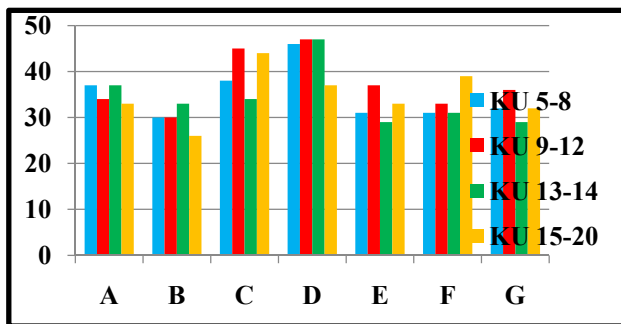


Figure 4. Bar Diagram of the Completeness of Soccer Facilities and Infrastructure in Yogyakarta City Soccer Schools in 2016 by Age Group of Each SSB

Information:

- A BROWIDJOYO
- B SINAR MATARAM
- C GAMA
- D BHARATA
- E HW
- F AFA
- G MAS

Based on the picture above, it shows that SSB BHARATA has the most complete facilities and infrastructure among Yogyakarta City soccer schools, while SSB SINAR MATARAM has the least facilities and infrastructure among Yogyakarta City soccer schools.

2. SSB in the "Medium" category

Football schools (SSB) that fall into the "good enough" category should add or procure soccer facilities, such as increasing the number of balls that are not in accordance with the number of students available, the number of markers is still small, and improving existing infrastructure. It is expected that SSB trainers will be more creative in procuring modifications to the equipment in order to complete or support the training process.

3. SSB in the "good" category

SSB which fall into the "good" category are expected to maintain and add infrastructure facilities so that the training process can run more optimally and achievements are more easily achieved.

4. SSB in the "very good" category

For SSB which already have facilities and infrastructures in the "very good" category it should be to maintain the facilities and infrastructure that are already owned, it is better if SSB adds more modern and sophisticated infrastructure.

Based on the results of the discussion above, soccer schools that have complete facilities and infrastructure in the category of adequate and few have complete soccer facilities and infrastructure should pay more attention to and complete lack of facilities and infrastructure to support the training process and achieve the highest achievement goals (AFC, 2012; Burhaein, 2017a; Huijgen, Elferink-Gemser, Post, & Visscher, 2010). Whereas the soccer school that already has the most complete facilities and facilities of soccer among other soccer schools should pay attention to, maintain, and better add more football facilities and infrastructure to support the training process so that it can run well and administrators who have a football school can be the goal for parents who want to send their children to the desired soccer school.

CONCLUSSION

Based on the results of data analysis and discussion, it can be concluded that the level of completeness of football facilities and infrastructure in Yogyakarta City SSB is in the category of "very low" by 0%, the category of "low" by 0%, the category of "enough" by 17.86%, the "good" category was 64.29%, and the "very good" category was 17.86%. Based on the average value of 35.39, the level of completeness of soccer facilities and infrastructure in Yogyakarta City Soccer

Schools in 2016 is in the "good" category. The contribution of the results of this study, which raises suggestions for SSB include: 1) SSB is expected to pay more attention to training facilities and infrastructure so that the training process is easier and can achieve the goals of the highest ideals; and 2) SSB which has incomplete facilities and infrastructure to pay more attention and complete the facilities and infrastructure to support the training process and in order to achieve a peak achievement. For further research: 1) to conduct research on a wider scale again in the scope of cities and provinces on the level of completeness of facilities and infrastructure in the SSB, 2) to conduct research on the level of completeness of SSB facilities and infrastructure using other methods; and 3) when collecting data so that close supervision is carried out when the respondent fills in the questionnaire provided so that the results are more objective.

Conflict of Interest

The author states there is no conflict of interests.

REFERENCES

1. AFC. (2012). *Fitness training in soccer II*. Bangsborport: Champaign.
2. Ardian, R., Suharjana, S., & Burhaein, E. (2019). Effect of progressive and repetitive part methods against the accuracy of kicking in football extracurricular students. *ScienceRise*, 1(7), 40–44. <https://doi.org/10.15587/2313-8416.2019.174318>
3. Burhaein, E. (2017a). Aktivitas Fisik Olahraga untuk Pertumbuhan dan Perkembangan Siswa SD. *Indonesian Journal of Primary Education*, 1(1), 51–58. <https://doi.org/10.17509/ijpe.v1i1.7497>
4. Burhaein, E. (2017b). Aktivitas Permainan Tradisional Berbasis Neurosainslearning Sebagai Pendidikan Karakter Bagi Anak Tunalaras. *Jurnal SPORTIF : Jurnal Penelitian Pembelajaran*, 3(1), 55. https://doi.org/10.29407/js_unpgri.v3i1.580
5. Duval, A., & Rompuy, B. Van. (2016). *The FIFA regulations on the status and transfer of players: Transnational law-making in the shadow of Bosman*. Netherland: Springer.
6. Huijgen, B. C. H., Elferink-Gemser, M. T., Post, W., & Visscher, C. (2010). Development of dribbling in talented youth soccer players Technical skills aged 12-19 years: A longitudinal study. *Journal of Sports Sciences*, 28(7), 689–698. <https://doi.org/https://doi.org/10.1080/02640411003645679>
7. Kementerian Pendidikan dan Kebudayaan. (2003). *Peraturan Pendidikan No 20 Tahun 2003 tentang Sistem Pendidikan Nasional Indonesia*.
8. Mustofa, F., Mansur, M., & Burhaein, E. (2019). Differences in the effect of learning methods massed practice throwing and distributed distributed practice on

- learning outcomes skills for the accuracy of top softball. *Journal of Sport Sciences Researches*, 4(2), 213–222. <https://doi.org/10.25307/jssr.571793>
9. Phytanza, D. T. P., Burhaein, E., Sukoco, S., & Ghautama, S. W. (2018). Life Skill Dimension based on Unified Sports Soccer Program in Physical Education of Intellectual Disability. *Yaşam Becerileri Psikoloji Dergisi*, 2(4), 199–205. <https://doi.org/https://doi.org/10.31461/ybpd.453865>
 10. Prasetya, N. M. (2019). Analisis Framing terhadap Pernyataan Resmi Kemenpora RI dan PSSI dalam Kasus Sanksi FIFA terhadap Indonesia. *Jurnal Komunikator*, 10(1), 10–23.
 11. Slaney, K. L., Storey, J. E., & Barnes, J. (2011). Is my test valid? Guidelines for the practicing psychologist for evaluating the psychometric properties of measures. *International Journal of Forensic Mental Health*, 10(4), 261–283. <https://doi.org/10.1080/14999013.2011.627086>
 12. Sugiyono, S. (2014). *Metode penelitian kuantitatif kualitatif dan R&D*. Bandung: Alfabeta.
 13. Tarista, R., & Jayadi, I. (2017). Survei Keterampilan Teknik Dasar Permainan Sepakbola (Studi pada Ssb Rheza Mahasiswa Ku-14 Tahun). *Jurnal Prestasi Olahraga*, 1(1), 1–14.

КОМПЛЕТНОСТ ОБЈЕКТА И ИНФРАСТРУКТУРЕ ЂКОЛА ФУДБАЛА (SSB): ПРЕГЛЕД ГРУПЕ СТАРОСНЕ ДОБИ ОД 8- 20 ГОДИНА У ГРАДУ ЈОГИКАРТА

САЖЕТАК

Предмет овог истраживања је још увек непознати ниво комплетности фудбалских објеката и инфраструктуре у школама фудбала (ССБ) широм града Јогикарте. Истраживање жели утврдити колико су комплетни садржаји и инфраструктура фудбала у ССБ-у широм града Јогикарте. Ово истраживање је описано. Метода која се користи у овом истраживању је метода анкете са техникама прикупљања података помоћу упитника. Испитаници у овој студији су школе фудбала (ССБ) широм Јогикарте које су активне и регистроване у ИКА Јогикарта. Техника узорковања у овој студији била је употреба смишљеног узорковања, што је обухватило 28 тренера из 7 фудбалских школа (ССБ). Технике анализе података користе описну анализу како је и приказано у облику постотака. На основу резултата истраживања може се закључити да је ниво комплетности фудбалских објеката и инфраструктуре Градској школи фудбала Јогикарта (СББ) у 2016. години у категорији „врло низак“ 0%, у категорији „низак“ 0%, у категорији „довољан“ 17,86%, у категорији „добар“ 64,29% а у категорији „врло добар“ 17,86%. На основу просечне вредности 35,39 степен потпуности комплекса фудбалских објеката и инфраструктуре у школама фудбала у граду Јогикарта у 2016. години се налази у категорији „добар“.

Ключне речи: объекты и инфраструктура, футбол, школа фудбала (ССБ)

УКОМПЛЕКТОВАННОСТЬ ОБЪЕКТОВ И ИНФРАСТРУКТУРА ФУТБОЛЬНОЙ ШКОЛЫ (SSB): ОПРОС ДЛЯ ГРУППЫ В ВОЗРАСТЕ 8-20 ЛЕТ В ГОРОДЕ ЙОДЖЯКАРТА

АННОТАЦИЯ

Данное исследование обусловлено еще не изученным уровнем укомплектованности футбольных объектов и инфраструктуры в футбольных школах (ССБ) по всему городу Йоджякарта. Это исследование направлено на то, чтобы определить, как укомплектовать объекты и инфраструктуру футбола в ССБ по всему городу Йоджякарта. Это исследование носит описательный характер. Метод, используемый в этом исследовании, представляет собой опрос, основанный на методах сбора данных с помощью опросника. Предметом данного исследования являются футбольные школы (ССБ) по всему городу Йоджякарта, которые активны и зарегистрированы в ИКА Йоджякарта. Методика данного исследования представляла собой целенаправленную выборку, в которой приняли участие 28 тренеров семи футбольных школ (ССБ). Методы анализа данных на основе описательного анализа изложены в виде процентных соотношений. Результаты исследования позволяют сделать вывод, что уровень укомплектованности футбольных объектов и инфраструктуры в городской футбольной школе Йоджякарта (ССБ) в 2016 году находился в категории "очень низкий" на 0%, в категории "низкий" на 0%, в категории "достаточный" на 17,86%, в категории "хороший" на 64,29% и в категории "очень хороший" на 17,86%. Исходя из среднего значения 35.39, уровень укомплектованности футбольных объектов, а также инфраструктуры в футбольных школах города Йоджякарта в 2016 году находился в категории "хороший".

Ключевые слова: объекты и инфраструктура, футбол, футбольная школа (ССБ).

Received on 22.03.2020.

Accepted on 28.04.2020.